



Sobha Orbis

by Sobha

📍 Dubai • Al Hebiah First • Motor City

1BR, 2BR available
**from 1,0 M
AED**

Down Payment
from
**231 617
AED**

Completion
2027

Footage
**from 536.15
ft²**

1BR

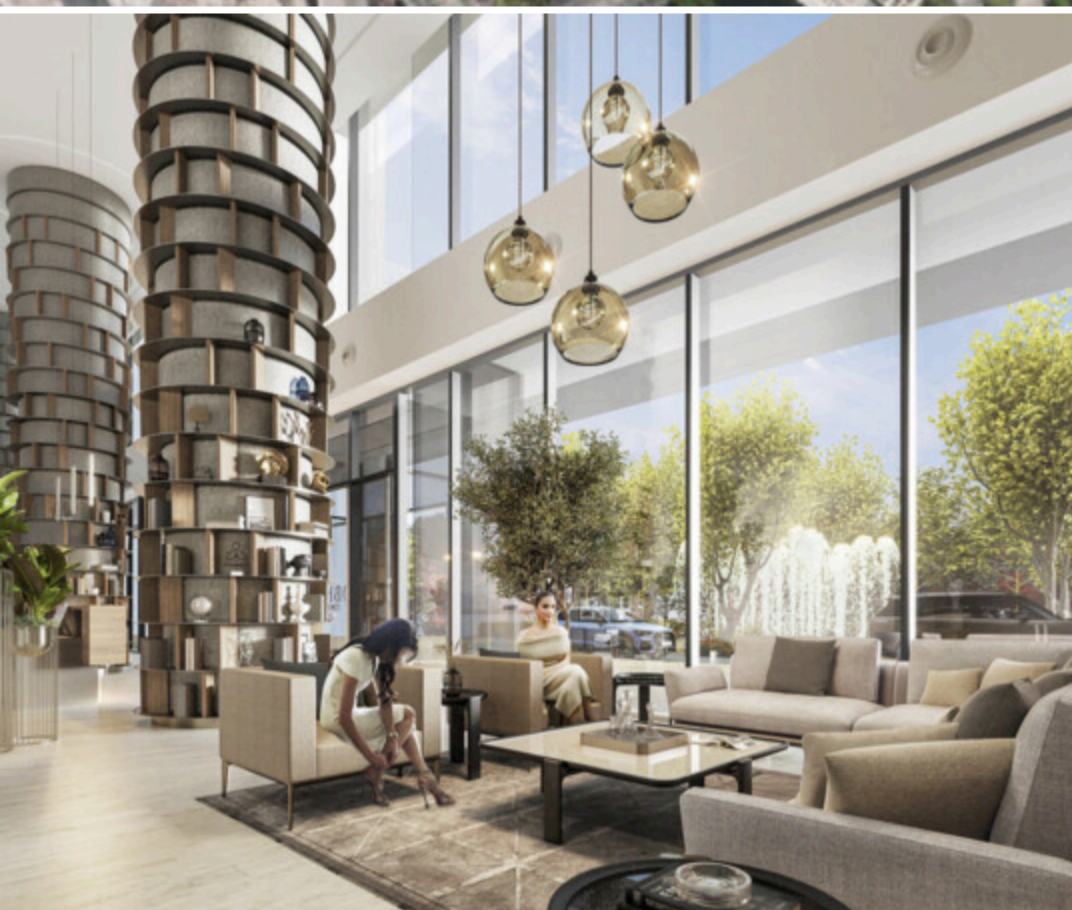
965 070 — 1 333 748
AED

536.15—702.45 ft²

2BR

1 781 928 — 2 025 737
AED

985.33—992.54 ft²





Sobha Orbis

project

Project Description

Sobha Orbis, a masterpiece by the renowned real estate developer Sobha, stands tall in the heart of Motor City, Dubai. This residential gem is a testament to luxury living, offering a harmonious blend of modern design, unparalleled amenities, and a vibrant community atmosphere.

Rising 40 floors high, Sobha Orbis boasts a striking architectural presence, with its sleek towers adorned with 1, 1.5, and 2-bedroom apartments. Each residence is a haven of elegance, meticulously crafted with premium finishes and thoughtful layouts that cater to the discerning tastes of its residents....

Project Amenities



Concierge Service



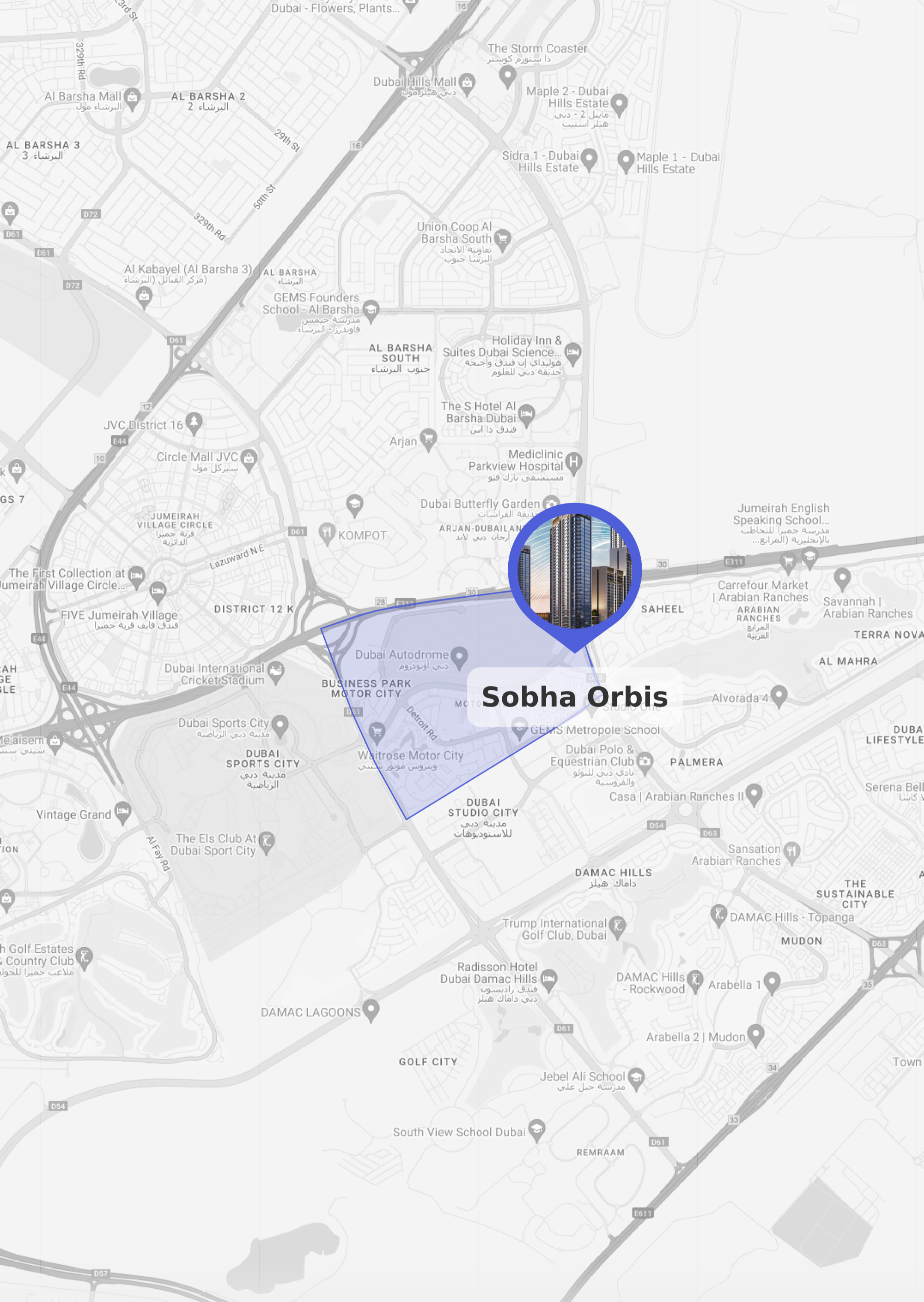
Pets Allowed



Kids Play Area

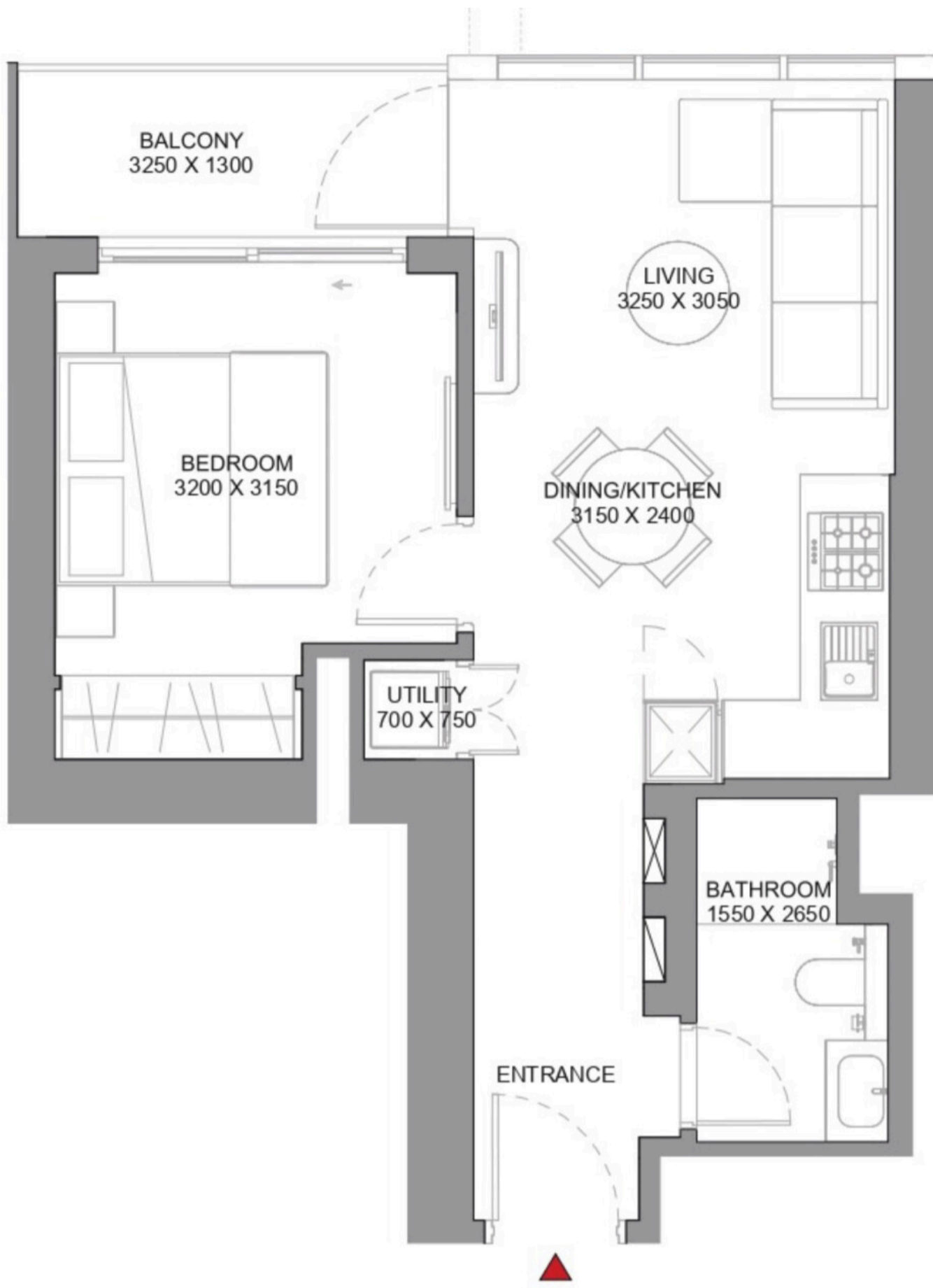


Sobha
Developer



Sobha Orbis

Al Hebiah First, Motor City



Tower A

1 BEDROOM APARTMENT TYPE A (with balcony)

Apartment • 33 units

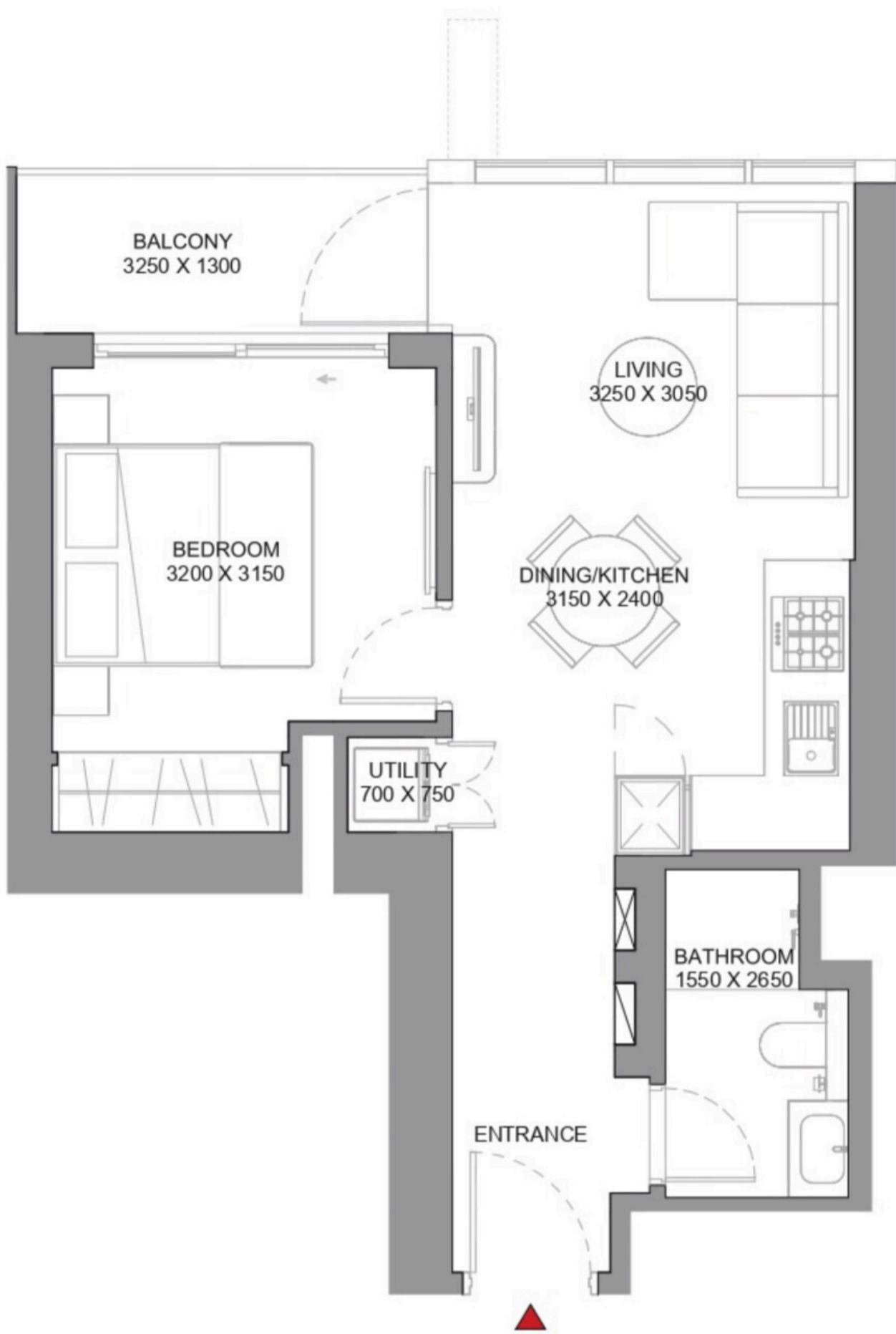
998 887 — 1 039 406 AED

Total S
545.08 ft²

Bedrooms
1 BR

Living S
490.94 ft²

Balconies
1



Tower A

1 BEDROOM APARTMENT TYPE A (with balcony) VARIANT 1

Apartment • 13 units

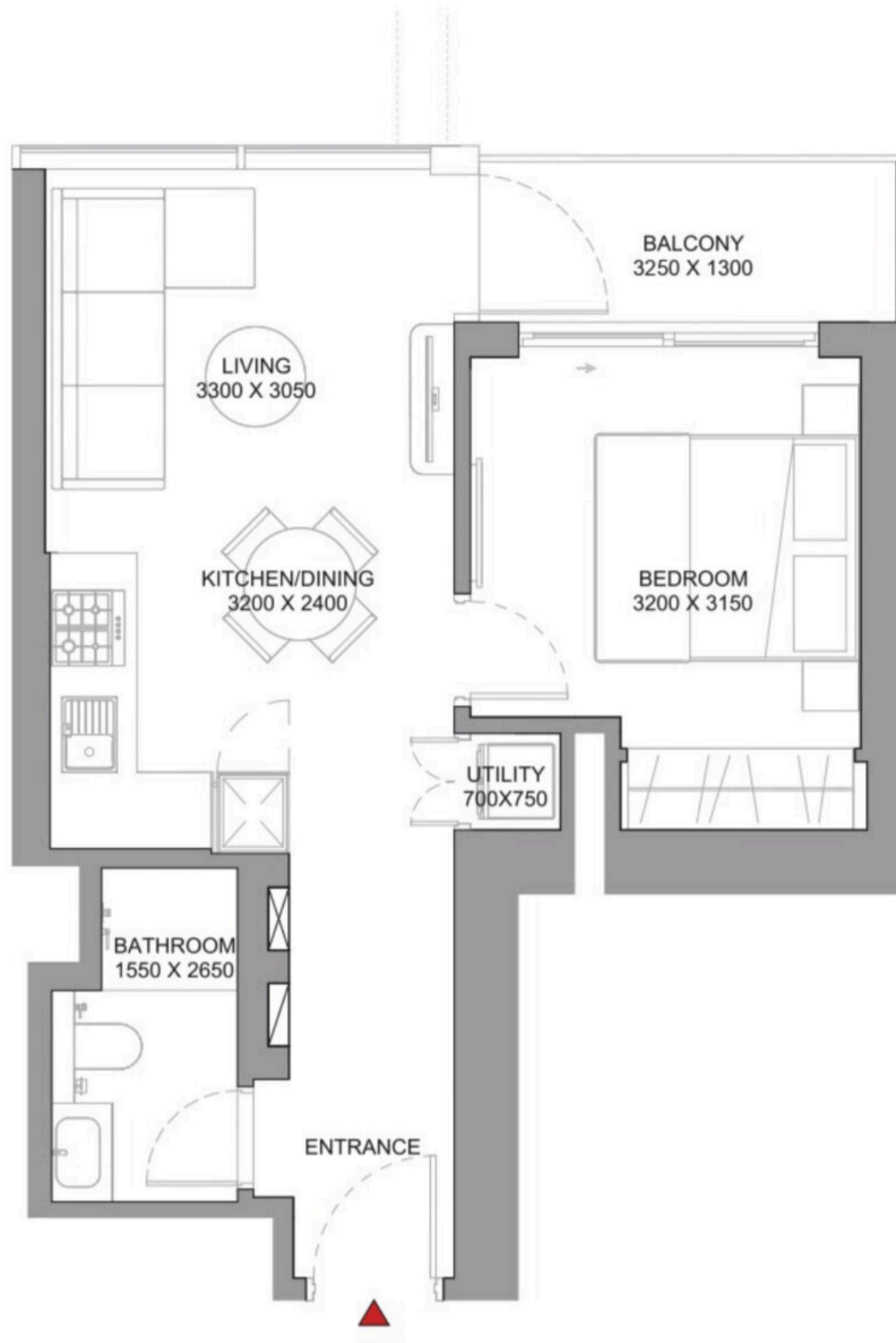
992 189 — 1 034 367 AED

Total S
543.47 ft²

Bedrooms
1 BR

Living S
486.96 ft²

Balconies
1



Tower A

1 BEDROOM APARTMENT TYPE B (with balcony)

Apartment • 36 units

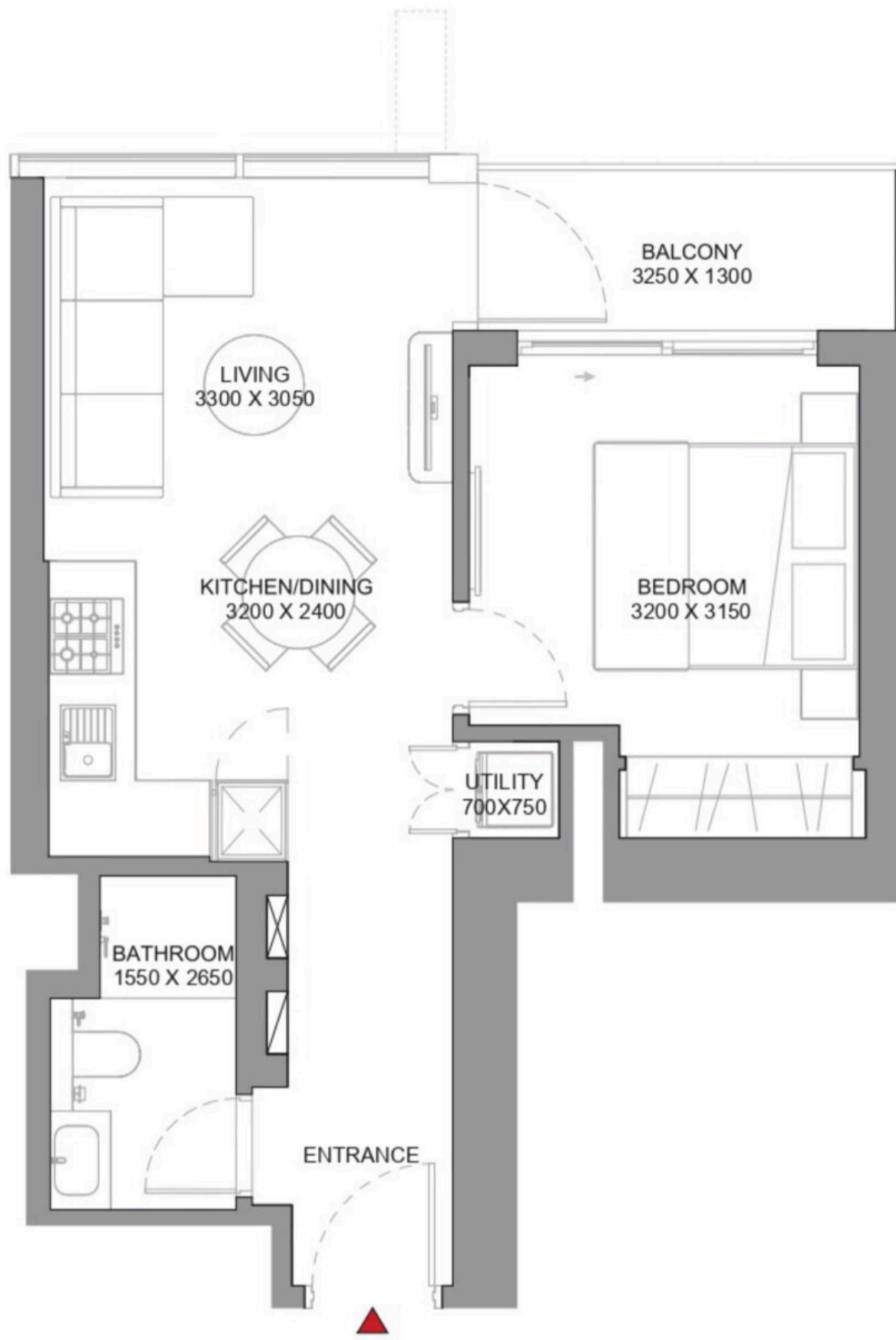
998 887 — 1 039 616 AED

 Total S
545.30 ft²

 Bedrooms
1 BR

 Living S
491.16 ft²

 Balconies
1



Tower A

1 BEDROOM APARTMENT TYPE B (with balcony) VARIANT 1

Apartment • 20 units

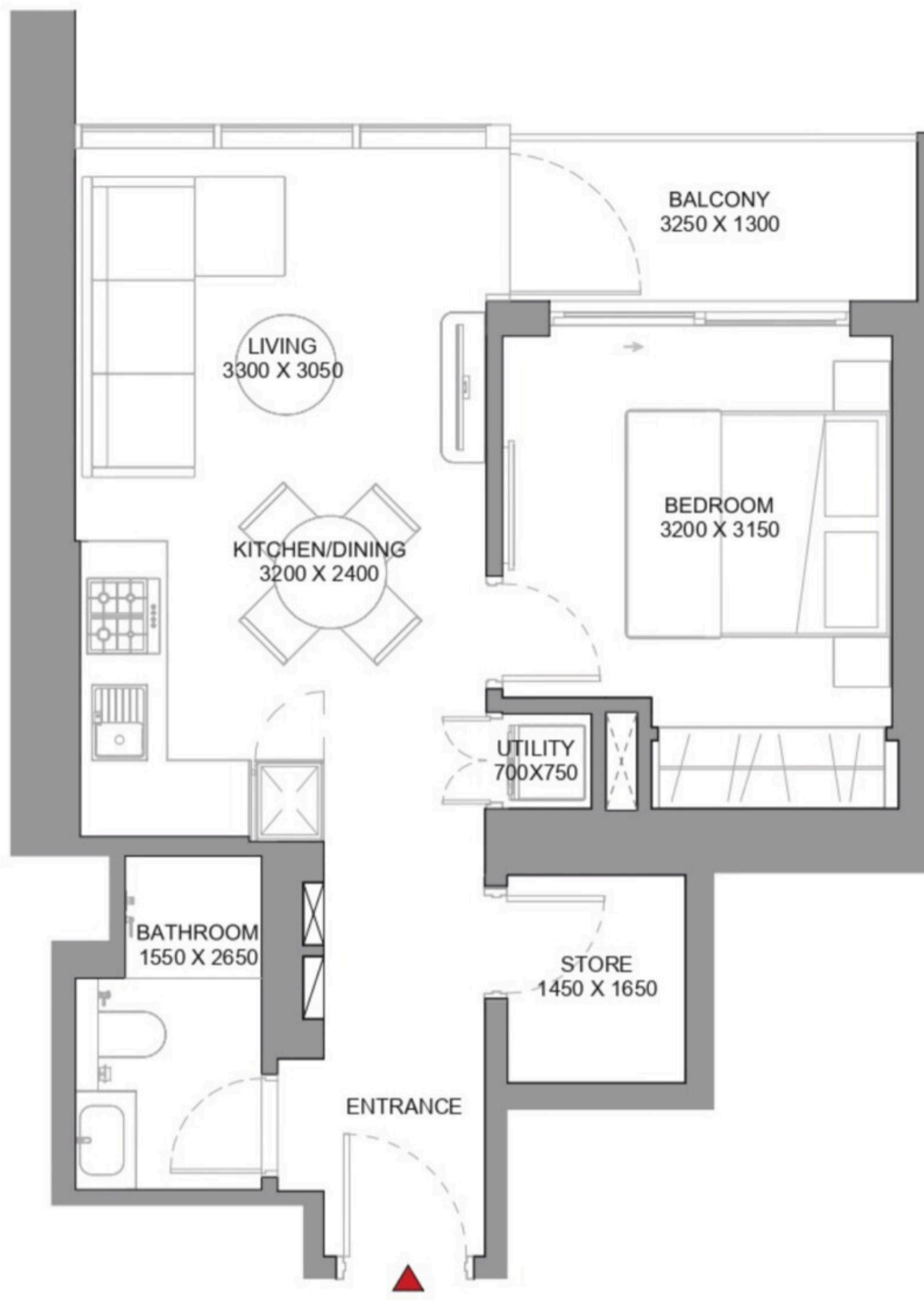
998 887 — 1 034 367 AED

 Total S
546.91 ft²

 Living S
490.40 ft²

 Bedrooms
1 BR

 Balconies
1




Tower A

1 BEDROOM APARTMENT TYPE C (with store room + balcony)

Apartment • 4 units

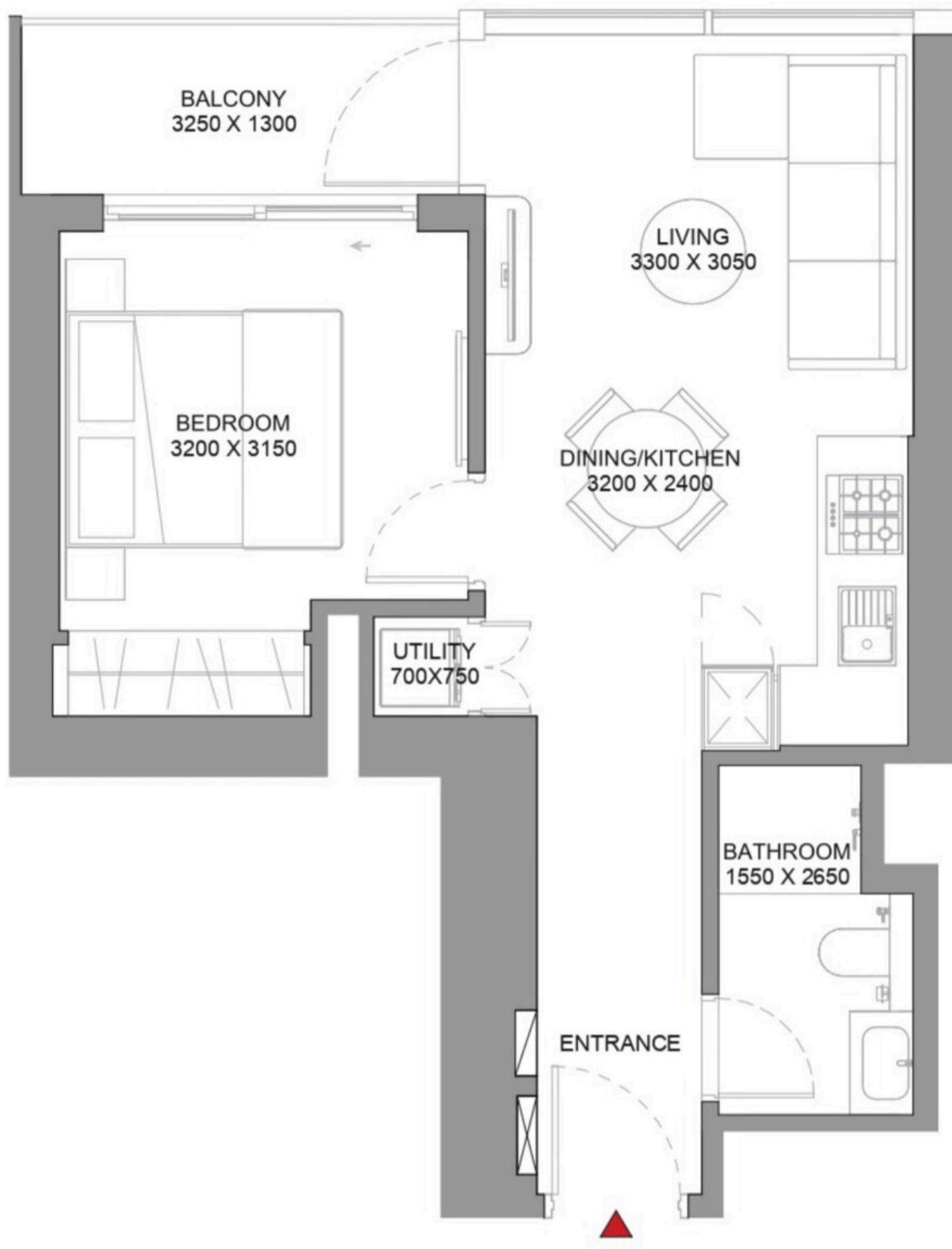
1 051 884 — 1 080 417 AED

 Total S
580.82 ft²

 Living S
524.31 ft²

 Bedrooms
1 BR

 Balconies
1



Tower A

1 BEDROOM APARTMENT TYPE D (with balcony)

Apartment • 5 units

1 005 281 — 1 021 366 AED



Total S
538.41 ft²



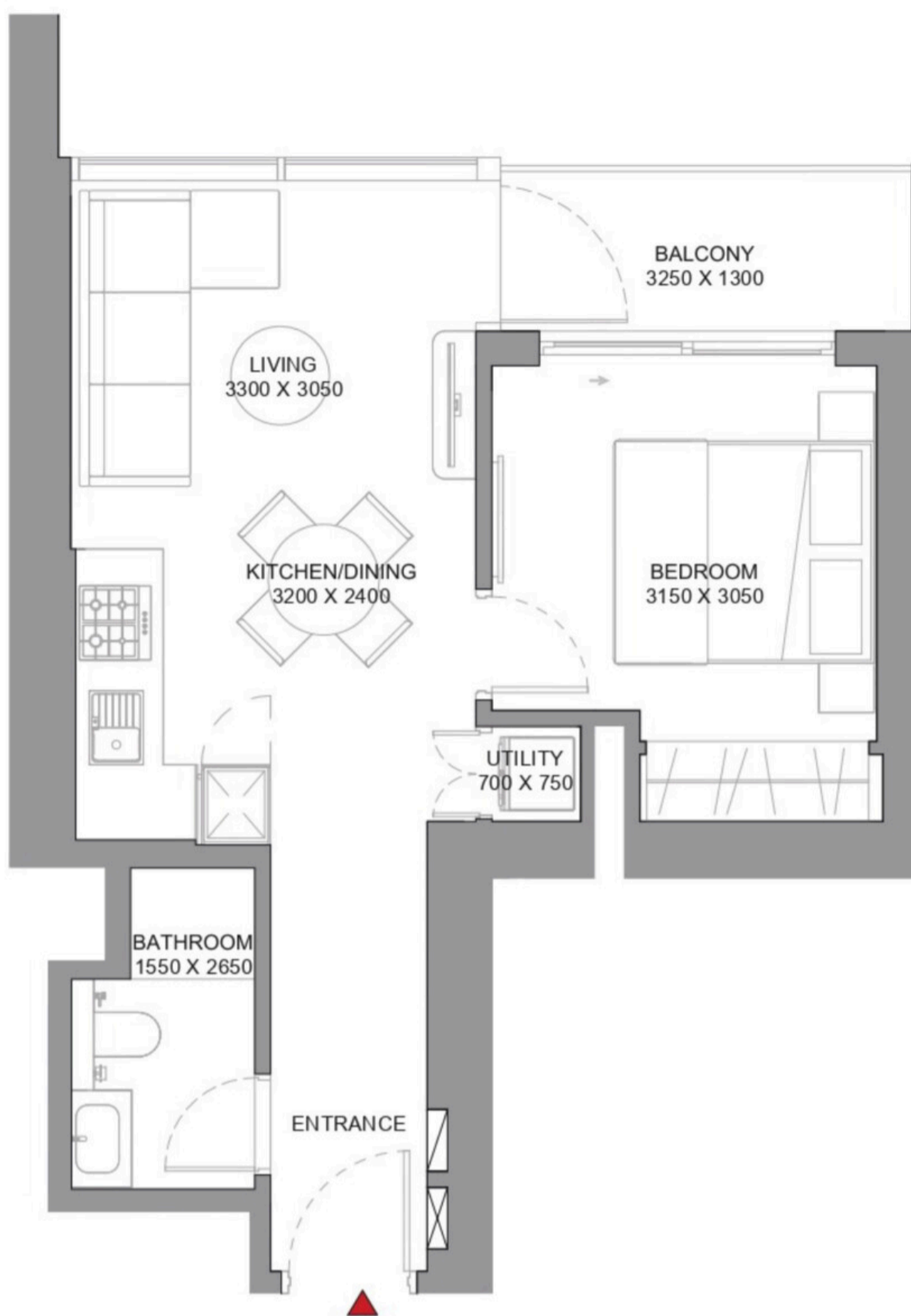
Living S
484.27 ft²



Bedrooms
1 BR



Balconies
1



Tower A

1 BEDROOM APARTMENT TYPE E (with balcony)

Apartment • 6 units

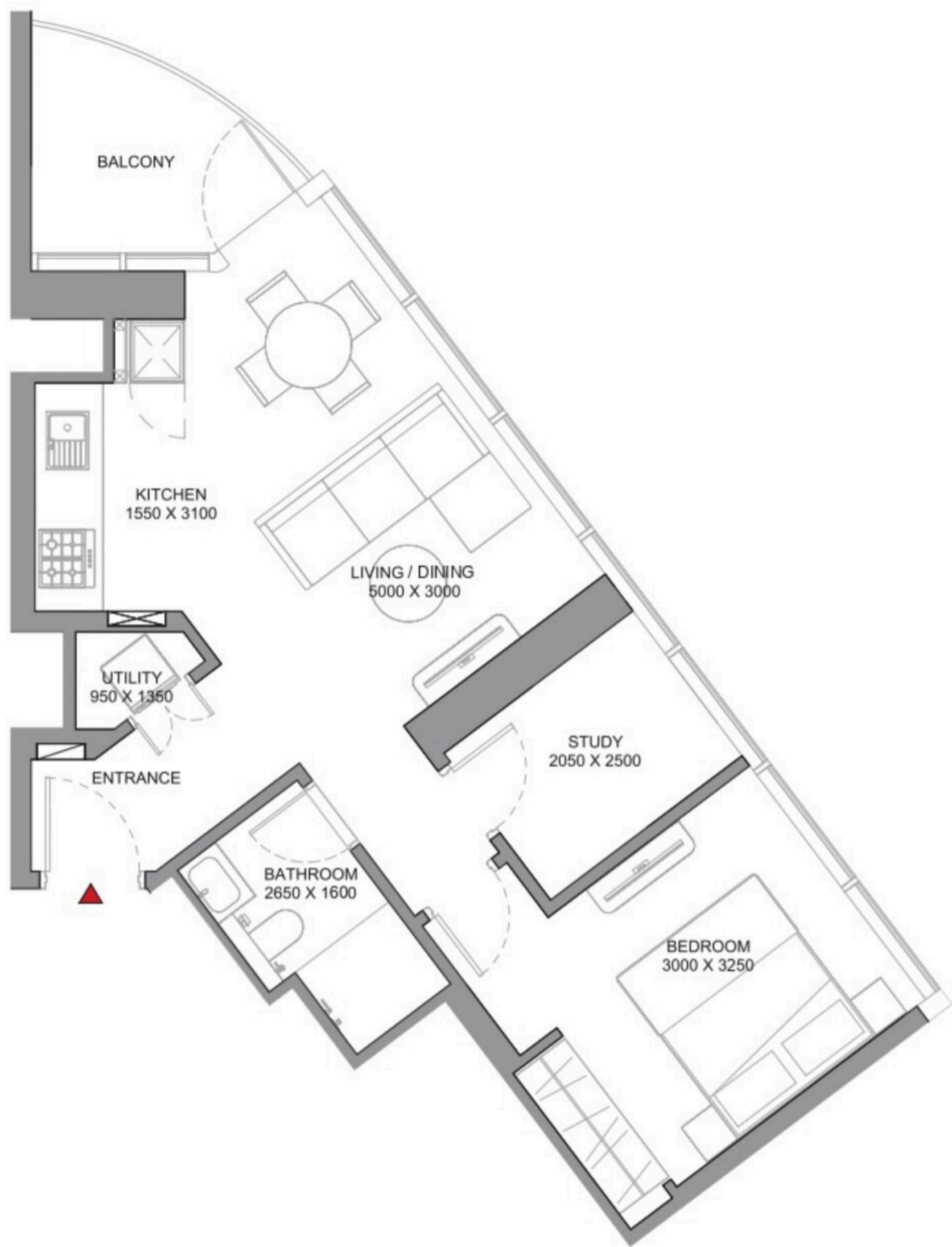
982 344 — 1 016 574 AED

 Total S
539.70 ft²

 Bedrooms
1 BR

 Living S
485.56 ft²

 Balconies
1




Tower A

1.5 BEDROOM APARTMENT TYPE A (with study room + balcony)

Apartment • 1 unit

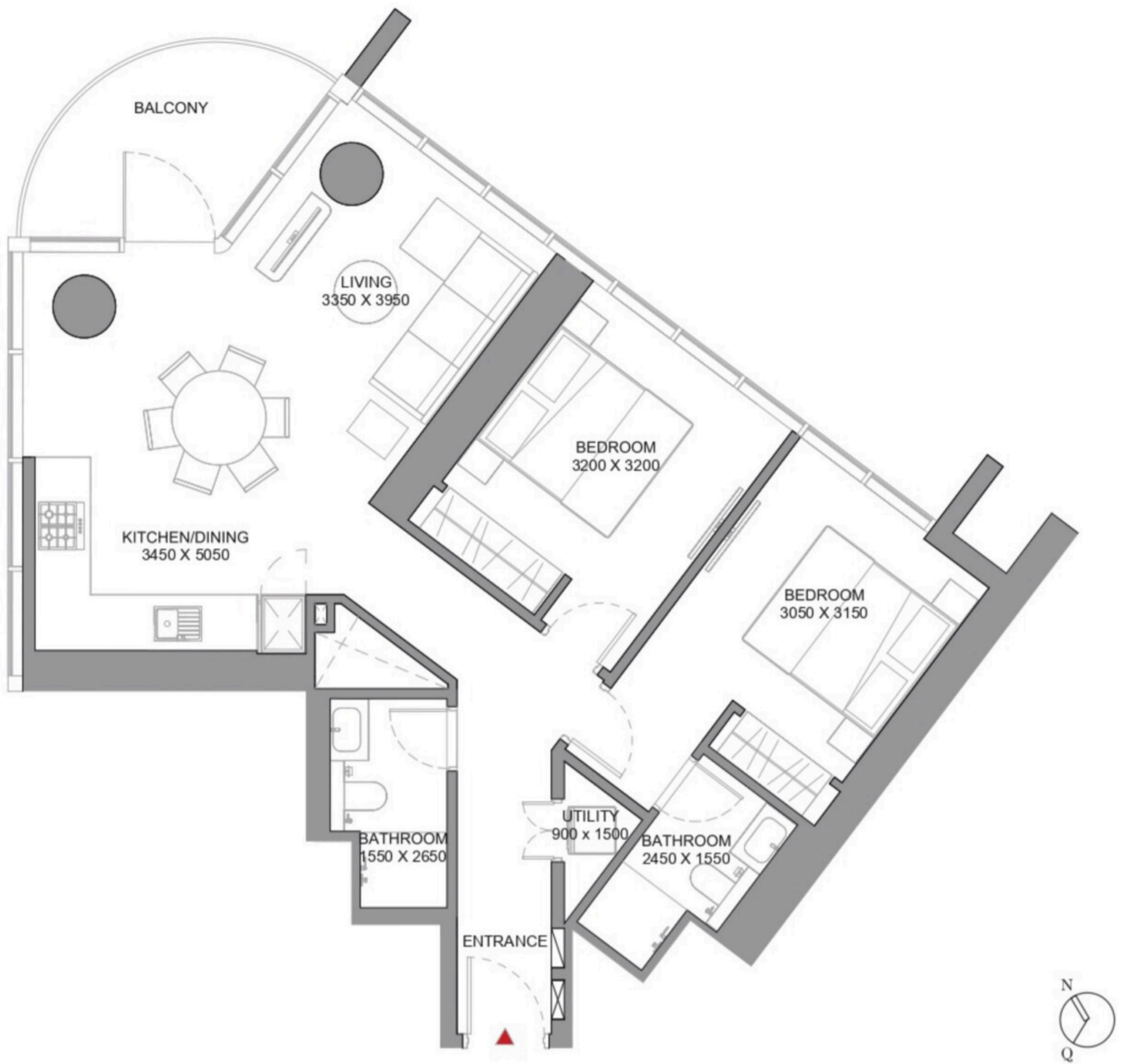
1 248 362 AED

 Total S
670.81 ft²

 Bedrooms
1 BR

 Living S
609.02 ft²

 Balconies
1




Tower A

2 BEDROOM APARTMENT TYPE A (with external shared powder + balcony)

Apartment • 12 units

1 781 928 — 1 989 599 AED

 Total S
984.47 ft²

 Bedrooms
2 BR

 Living S
906.32 ft²

 Balconies
1




Tower A

2 BEDROOM APARTMENT TYPE B (with external shared powder + balcony)

Apartment • 9 units

1 786 374 — 1 995 005 AED

 Total S
988.45 ft²

 Bedrooms
2 BR

 Living S
910.41 ft²

 Balconies
1

Payment plan 60/40



Example

Lets take a look how this payment plan will work with the cheapest unit in this project

1 BR • Apartment • 536.15 ft² • 965 070 AED

DOWN PAYMENT 39 753 AED fees included	232 767 AED
DURING CONSTRUCTION in 4 payments	386 028 AED
ON HANDOVER in 1 payment	386 028 AED
TOTAL SUM	1 044 576 AED