



Sobha One

by Sobha

📍 Dubai • Ras Al Khor Ind. First

1BR, 2BR, 3BR,
4BR, 5BR available

**from 1,4 M
AED**

Down Payment
from

**336 000
AED**

Completion

2026

Footage

**from 551.00
ft²**

1BR

1 400 000 — 1 876 087
AED

551.00—962.19 ft²

2BR

2 114 596 — 4 215 181
AED

1031.50—1918.23 ft²

3BR

4 406 383 — 5 435 263
AED

2179.80—2498.95 ft²

4BR

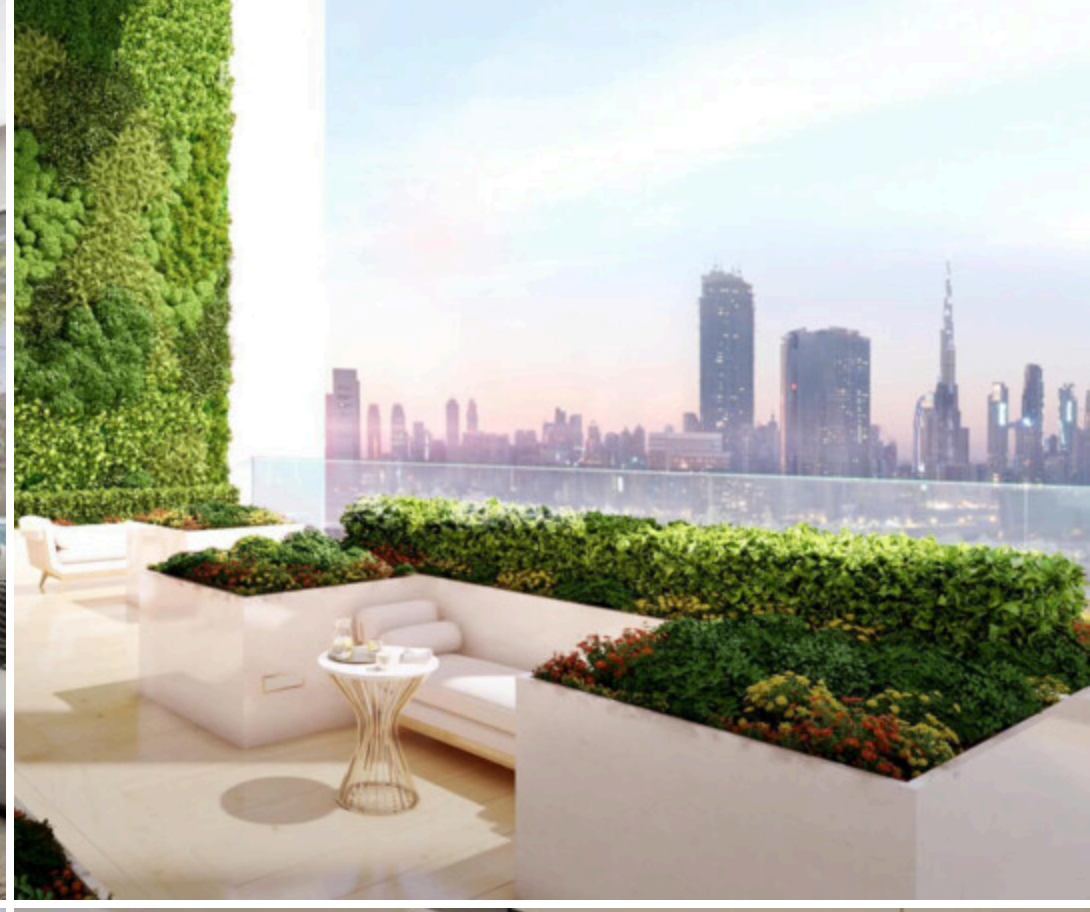
4 885 588 — 8 042 976
AED

2354.50—3351.23 ft²

5BR

11 723 184 — 11 725
248 AED

4884.66—4885.52 ft²





Sobha One

project

Project Description

Sobha One is a premium mixed-use project which will be located in the area of Ras Al Khor, and will become a home to over 9,500 residents, including families with children, as well as single professionals and couples. There is no doubt that the project will become one of the most in-demand addresses within the emirate of Dubai. This can be explained by its thoughtful layouts, as well as a great number of amenities and social infrastructure objects, located right on the territory of the development, which include but are not limited to a polyclinic, nursery facilities, a mosque, as well as retail and dining options with a promenade.. Future owners are offered a wide range of...

Project Amenities



Shared Pool



Concierge Service



Covered Parking



Shared SPA



Security



Lobby



Pets Allowed



Kids Play Area



Central A/C & Heating



Sobha
Developer



Sobha One

© Ras Al Khor Ind. First



Tower E

1 BEDROOM APARTMENT TYPE B (with powder room + balcony) VARIANT 3

Apartment • 3 units

1 858 515 AED



Total S
809.12 ft²



Bedrooms
1 BR



Finishing
Designer finishing



Living S
675.65 ft²



Balconies
1



Furnishing
Furnished



Tower E

1 BEDROOM APARTMENT TYPE B (with powder room + balcony) VARIANT 4

Apartment • 2 units

1 858 262 AED



Total S
809.12 ft²



Bedrooms
1 BR



Finishing
Designer finishing



Living S
675.65 ft²



Balconies
1



Furnishing
Furnished



Tower E

1 BEDROOM APARTMENT TYPE C (with powder room + balcony) VARIANT 3

Apartment • 1 unit

1 858 768 AED



Total S
809.01 ft²



Bedrooms
1 BR



Finishing
Designer finishing



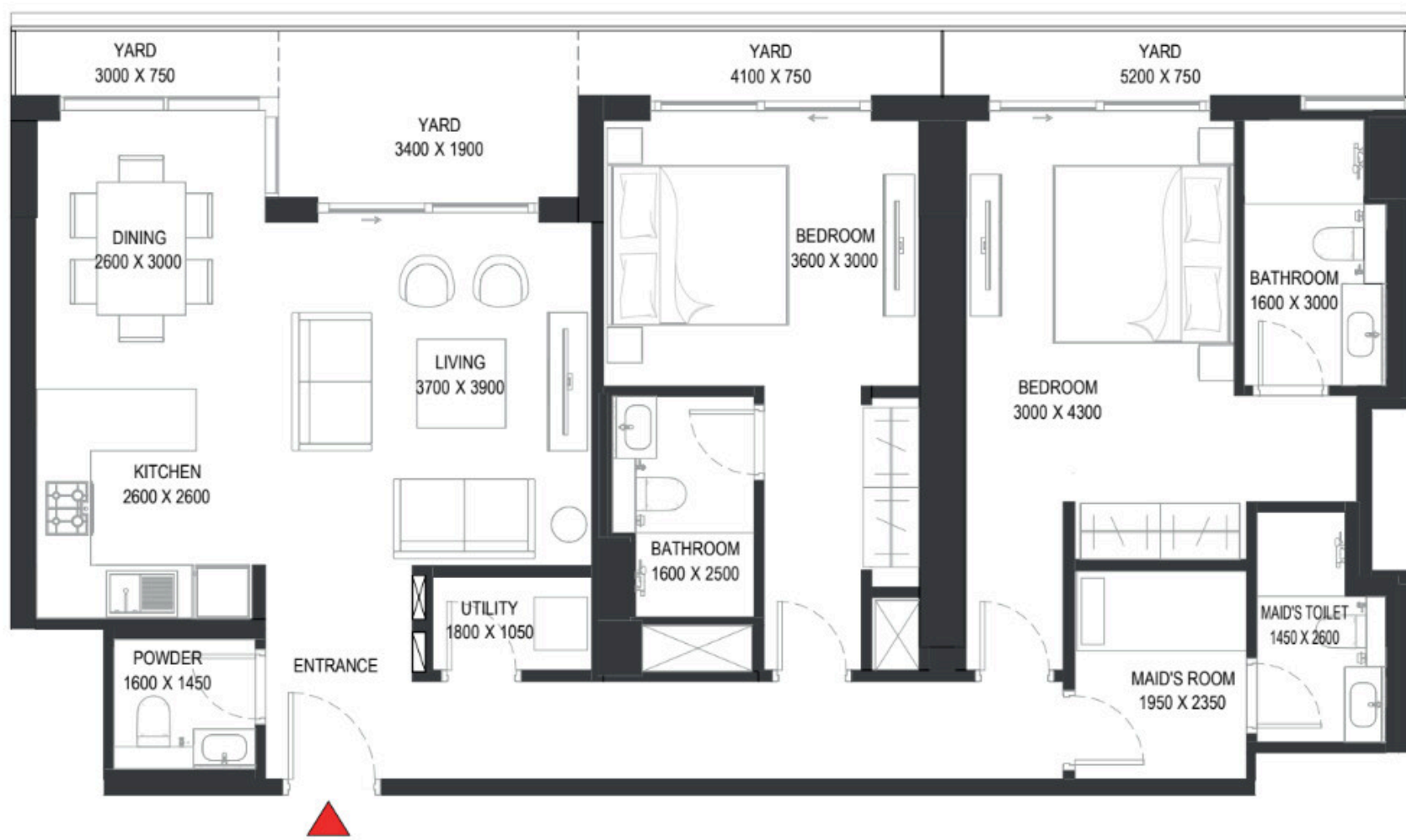
Living S
676.40 ft²



Balconies
1



Furnishing
Furnished



Tower A

2 BEDROOM LINK APARTMENT TYPE M (with maid room, powder room + yard)

Apartment • 1 unit

2 934 687 AED



Total S

1391.99 ft²



Bedrooms

2 BR



Finishing

Designer finishing



Living S

1204.05 ft²



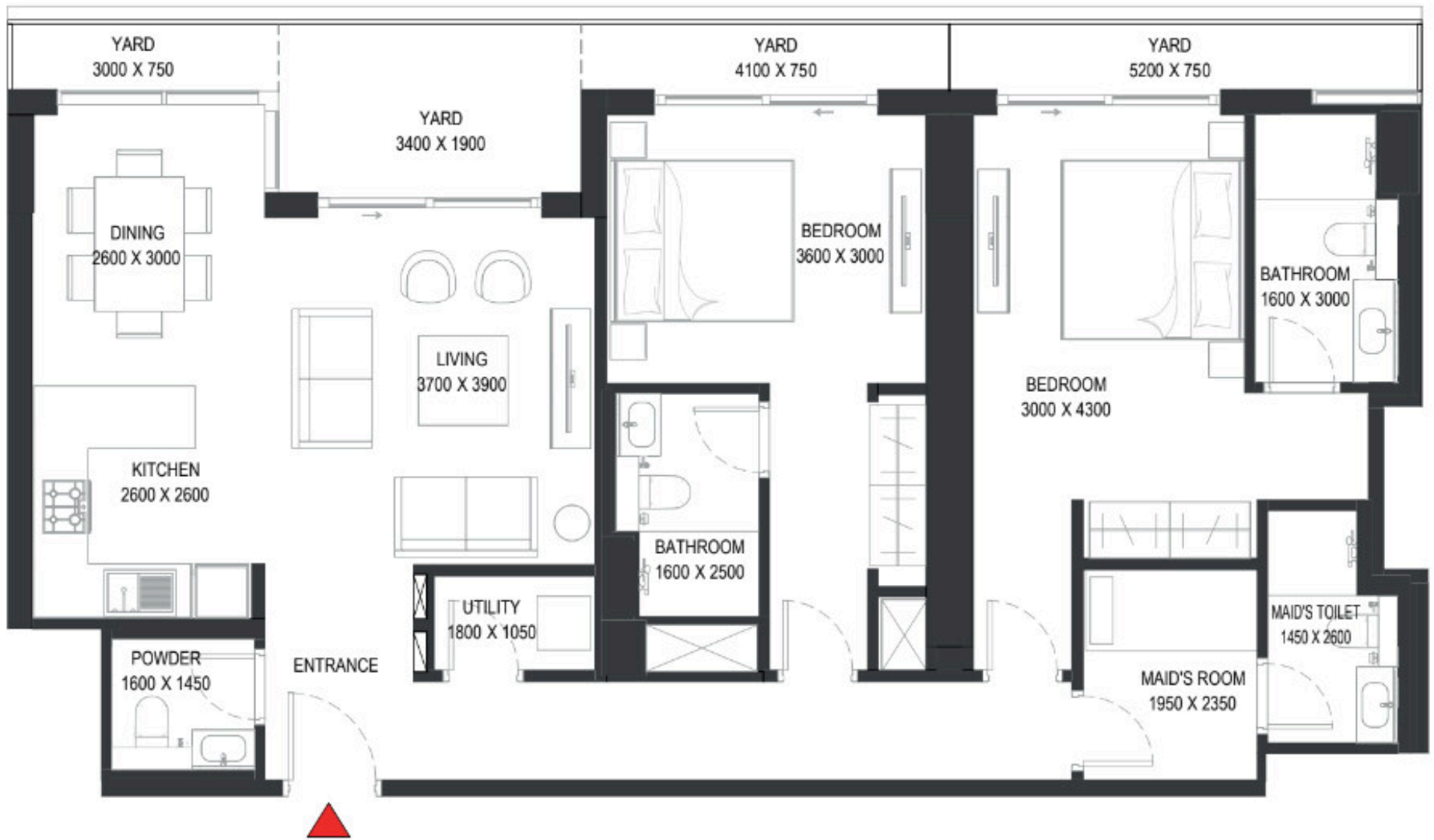
Balconies

1



Furnishing

Furnished



Tower B

2 BEDROOM LINK APARTMENT TYPE M (with maid room and powder room + yard)

Apartment • 1 unit

2 934 687 AED



Total S
1392.85 ft²



Living S
1204.91 ft²



Bedrooms
2 BR



Balconies
2



Finishing
Designer finishing



Furnishing
Furnished



Tower A

3 BEDROOM APARTMENT TYPE C (with store room and maid room + yard)

Apartment • 3 units

4 997 680 — 5 185 093 AED



Total S

2491.52 ft²



Living S

1708.55 ft²



Bedrooms

3 BR



Finishing

Designer finishing



Furnishing

Furnished



Tower A

3 BEDROOM APARTMENT TYPE D (with store room and maid room + yard) VARIANT 1

Apartment • 1 unit

4 525 468 AED



Total S

2244.60 ft²



Bedrooms

3 BR



Furnishing

Furnished



Living S

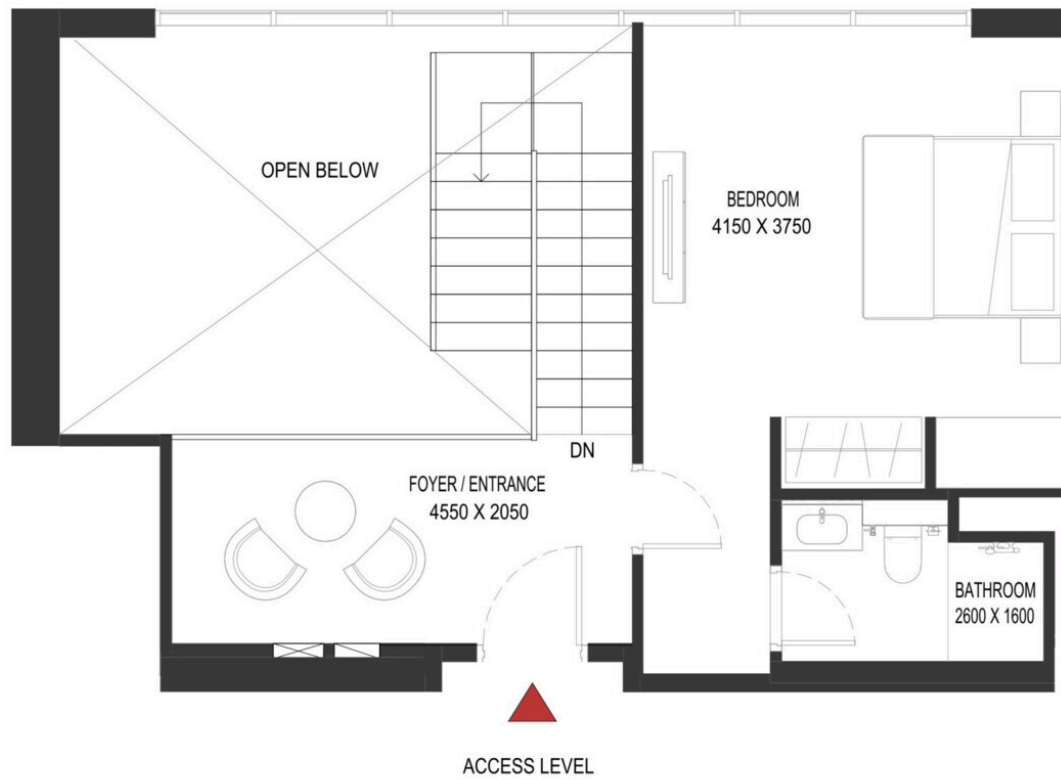
1708.55 ft²



Finishing

Designer finishing

1 LVL



2 LVL



Tower C

4 BEDROOM DUPLEX APARTMENT TYPE B (with maid room and powder room + balcony)

Apartment • 1 unit

4 990 769 AED



Total S

2412.51 ft²



Bedrooms

4 BR



Finishing

Designer finishing



Living S

2229.42 ft²



Balconies

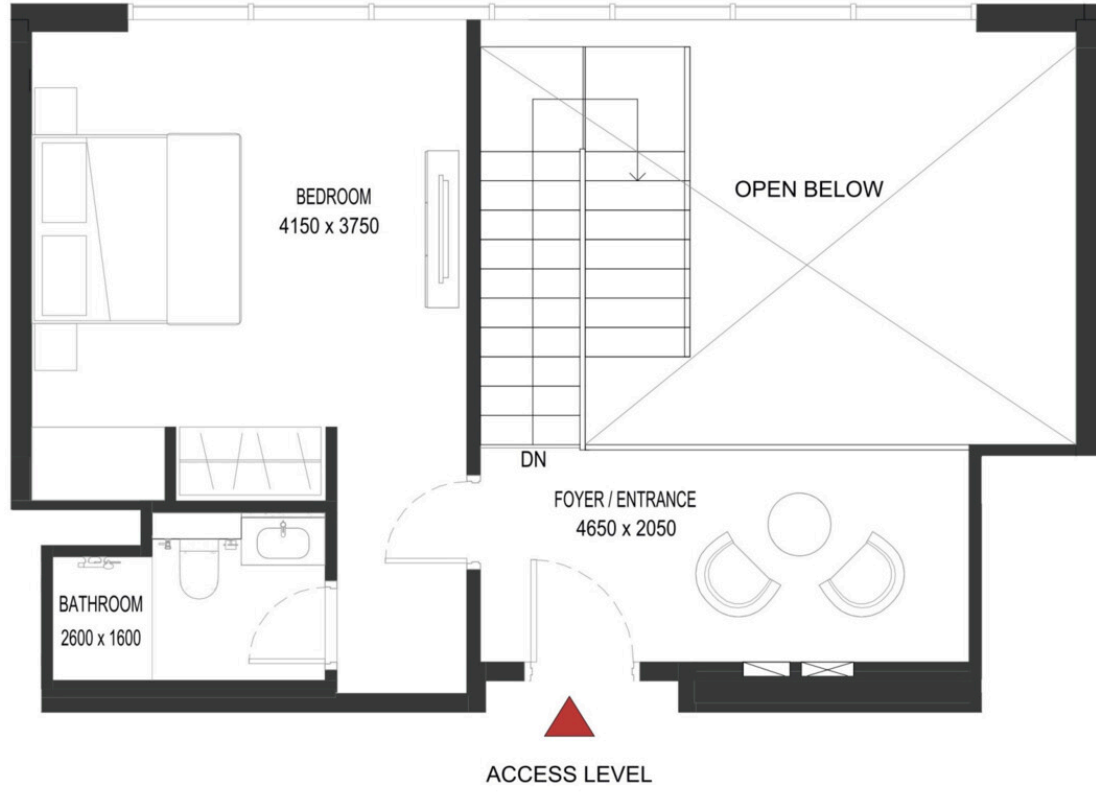
1



Furnishing

Furnished

1 LVL



2 LVL



Tower C

4 BEDROOM DUPLEX APARTMENT TYPE A (with maid room and powder room + balcony)

Apartment • 1 unit

4 885 588 AED



Total S

2360.09 ft²



Bedrooms

4 BR



Finishing

Designer finishing



Living S

2177.75 ft²



Balconies

1



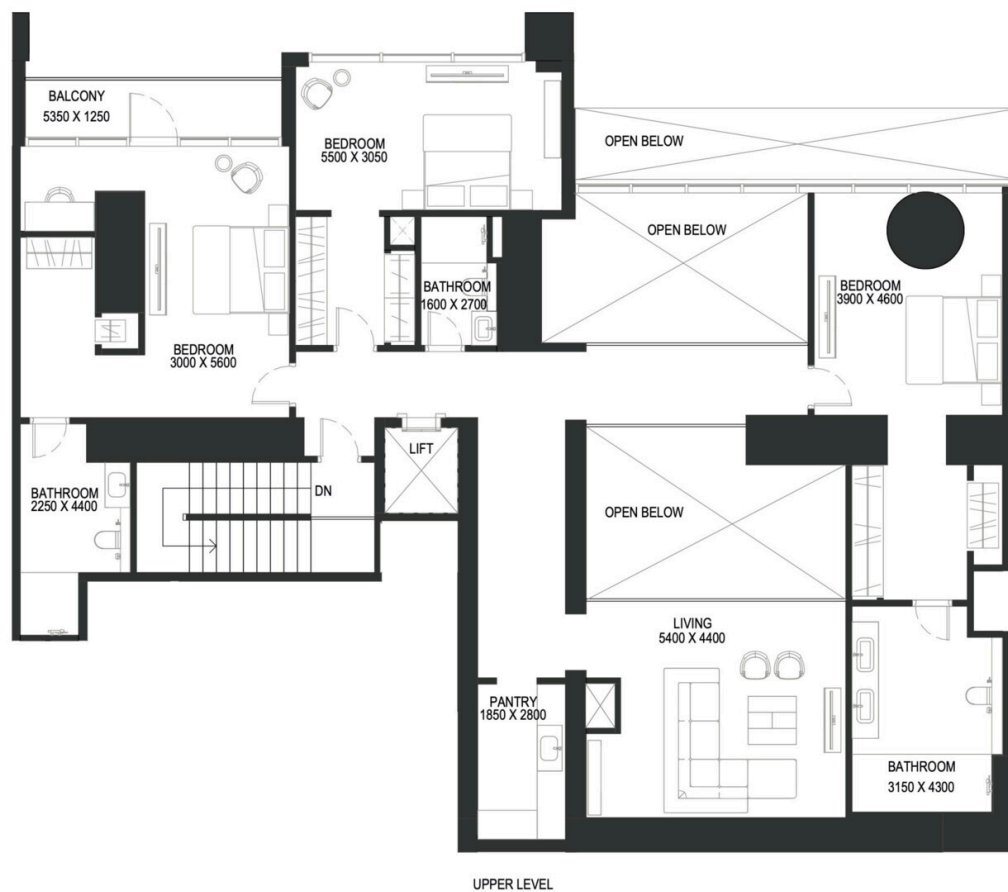
Furnishing

Furnished

1 LVL



2 LVL



Podium

5 BEDROOM DUPLEX APARTMENT TYPE B (with study room, maid room and lift + balcony)

Duplex • 2 units

11 723 184 — 11 725 248 AED



Total S
4844.72 ft²



Living S
4534.51 ft²



Bedrooms
5 BR



Balconies
3



Finishing
Designer finishing



Furnishing
Furnished

Payment plan 60/40



Example

Lets take a look how this payment plan will work with the cheapest unit in this project

1 BR • Apartment • 724.95 ft² • 1 594 890 AED

DOWN PAYMENT 64 946 AED fees included	383 924 AED
DURING CONSTRUCTION in 4 payments	637 956 AED
ON HANDOVER in 1 payment	637 956 AED
TOTAL SUM	1 724 781 AED