



# Skyscape Altius

by Sobha

📍 Dubai • Sobha Hartland 2 • Meydan • Bu Kadra

1BR, 2BR available  
**from 1,8 M  
AED**

Down Payment  
from  
**425 822  
AED**

Completion  
**2028**

Footage  
**from 750.57  
ft<sup>2</sup>**

**1BR**

1 774 260 — 2 432 610  
AED

750.57—906.00 ft<sup>2</sup>

**2BR**

2 359 016 — 3 216 102  
AED

966.81—1227.52 ft<sup>2</sup>









## Skyscape Altius

project

### Project Description

Elevate to a great new level of luxury at Skyscape Altius, a 85-story residential complex that exudes exceptional craftsmanship. Each moment at Skyscape Altius is a celebration of the perfect harmony between the peaceful lagoon and the vibrant cityscape, offering residents a taste of unparalleled beauty at the pinnacle of luxury living.

Embrace a waterfront lifestyle of beauty and tranquility as you admire the clear waters and captivating city views from the poised tower. Skyscape Altius is designed to cater to elite residents who seek exclusivity, offering a selection of 1, 1.5, 2, 2.5, and 3 bedroom apartments that provide an extraordinary vantage point above the city skyline....

### Project Amenities



Kids Play Area



## Sobha

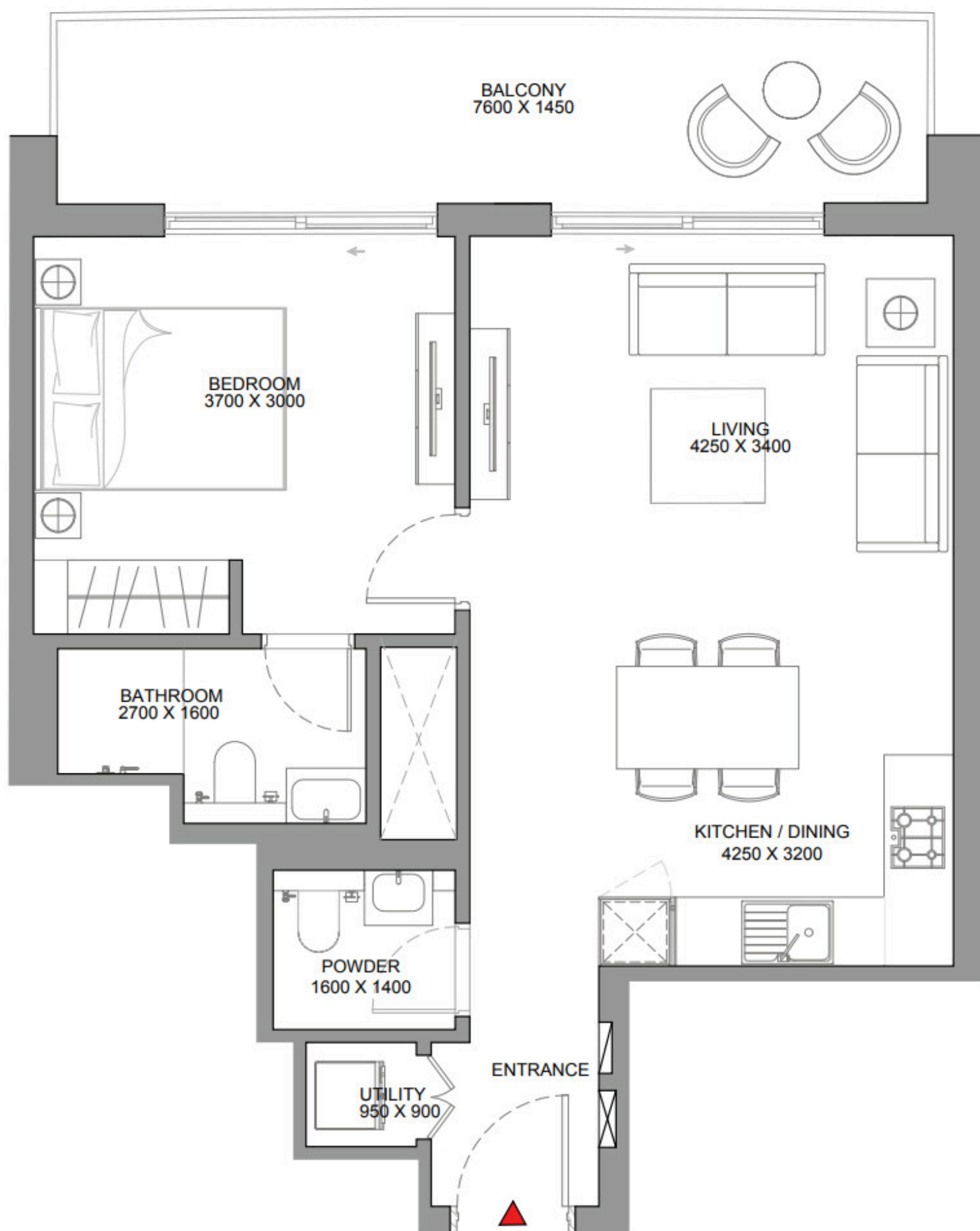
Developer



# Skyscape Altius

📍 **Sobha Hartland 2,  
Meydan, Bu Kadra**





Building 1

# 1 Bedroom Apartment Type B

Apartment • 35 units

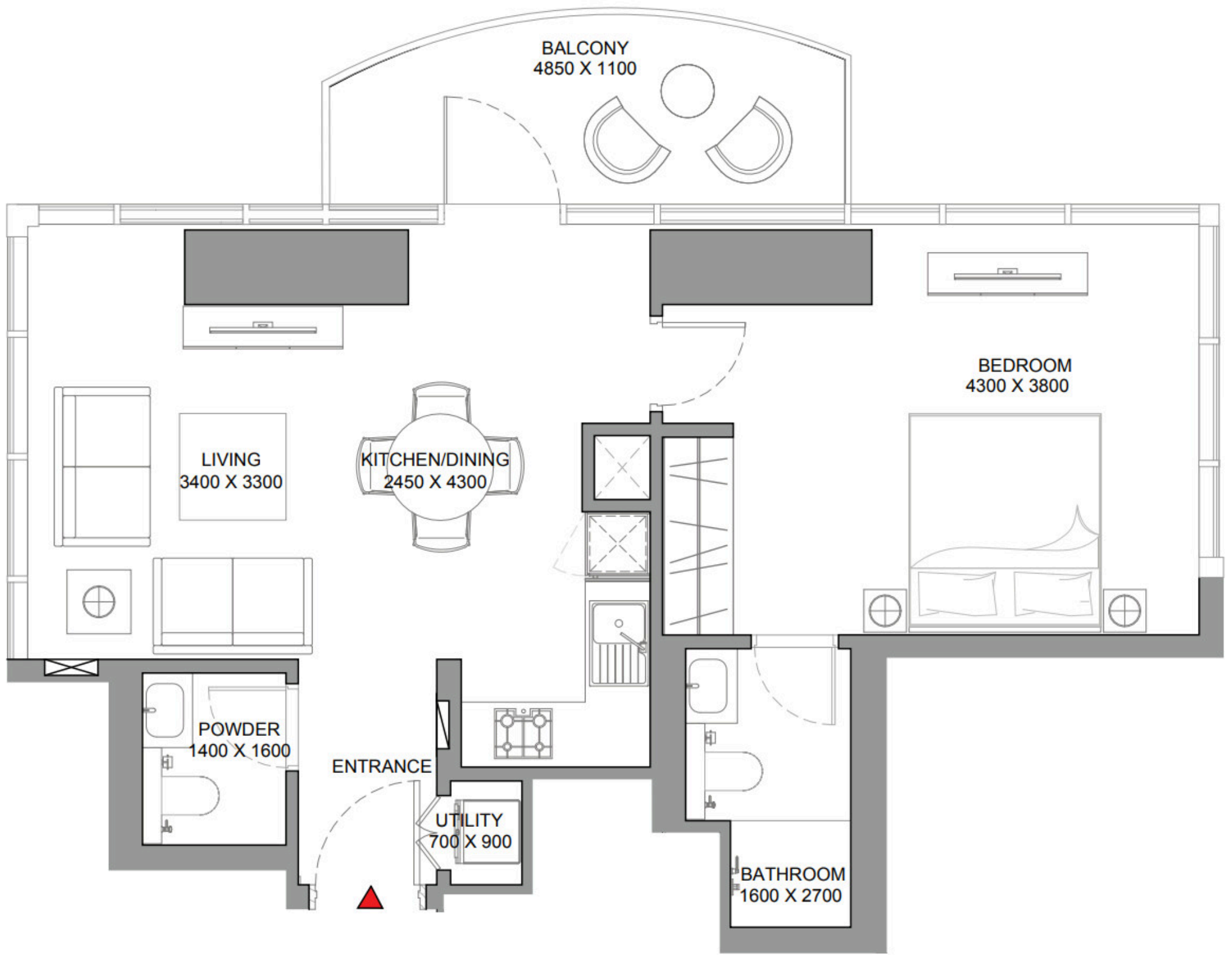
**1 774 260 — 1 880 716 AED**

 Total S  
**788.56 ft<sup>2</sup>**

 Bedrooms  
**1 BR**

 Living S  
**647.88 ft<sup>2</sup>**

 Balconies  
**1**



**Building 1**

**1 Bedroom Apartment Type C**

Apartment • 2 units

**1 917 681 — 1 928 939 AED**

 Total S  
**750.57 ft<sup>2</sup>**

 Living S  
**661.87 ft<sup>2</sup>**

 Bedrooms  
**1 BR**

 Balconies  
**1**



Building 1

## 1.5 Bedroom Apartment Type A

Apartment • 35 units

**1 937 857 — 2 049 181 AED**



Total S  
**824.62 ft<sup>2</sup>**



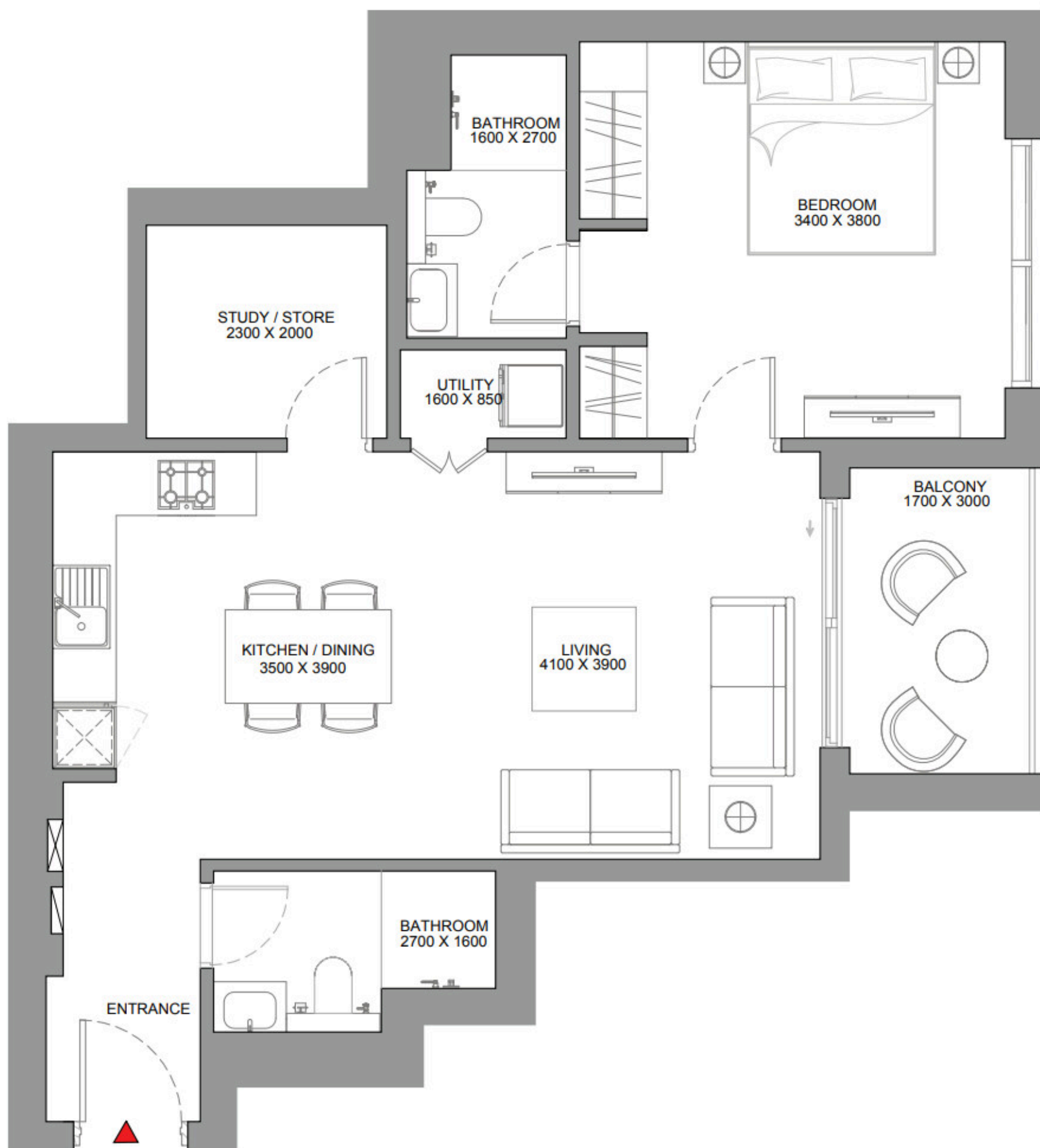
Living S  
**748.63 ft<sup>2</sup>**



Bedrooms  
**1 BR**



Balconies  
**1**



Building 1

## 1.5 Bedroom Apartment Type B

Apartment • 35 units

**2 016 535 — 2 132 379 AED**



Total S  
**858.10 ft<sup>2</sup>**



Living S  
**781.35 ft<sup>2</sup>**

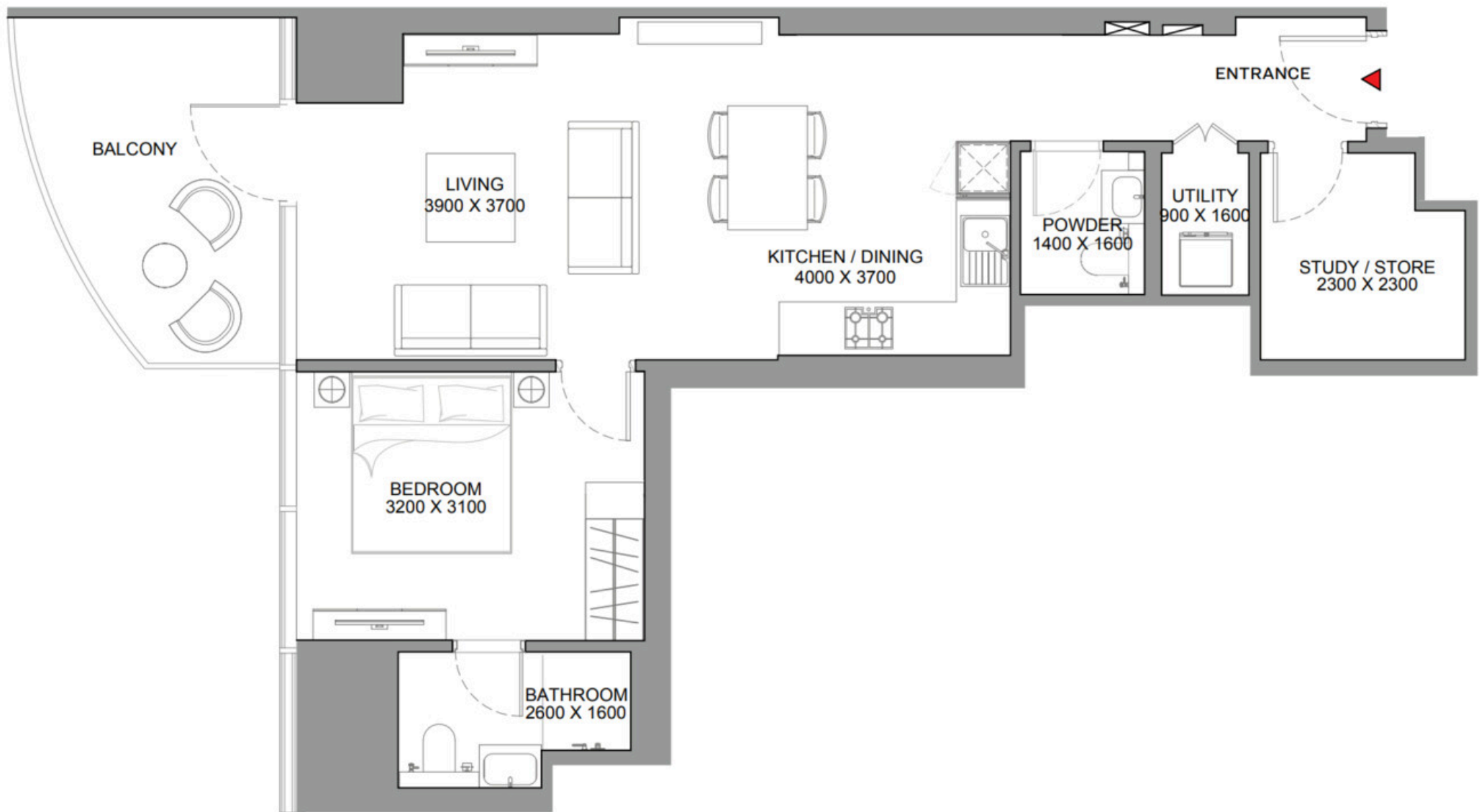


Bedrooms  
**1 BR**



Balconies  
**1**






**Building 1**

**1.5 Bedroom Apartment Type C**

Apartment • 27 units

**2 321 684 — 2 430 301 AED**

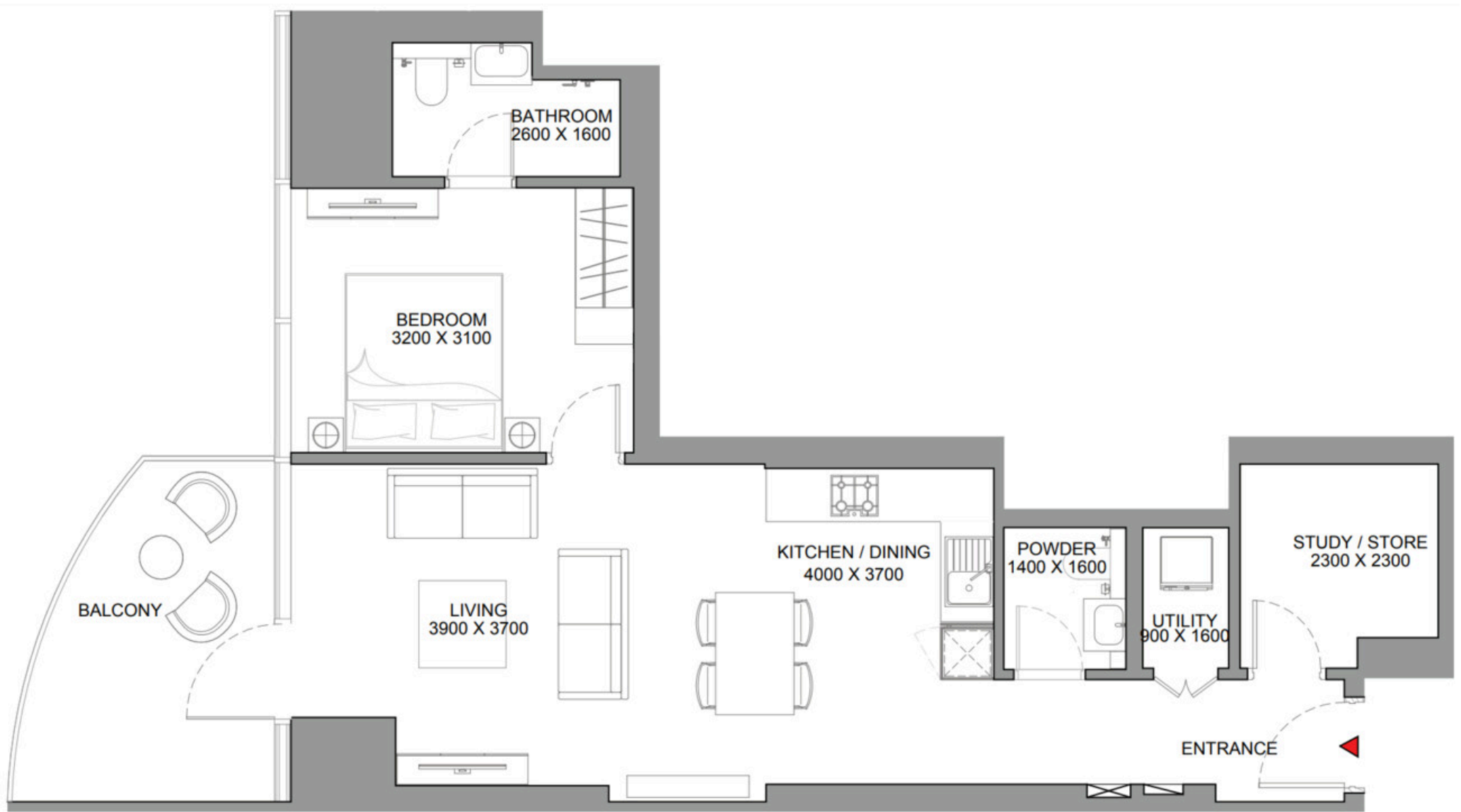
 Total S  
**905.14 ft<sup>2</sup>**

 Living S  
**791.58 ft<sup>2</sup>**

 Bedrooms  
**1 BR**

 Balconies  
**1**





## Building 1

# 1.5 Bedroom Apartment Type C Variant 1

Apartment • 27 units

**2 323 890 — 2 432 610 AED**



Total S  
**906.00 ft<sup>2</sup>**



Living S  
**792.44 ft<sup>2</sup>**

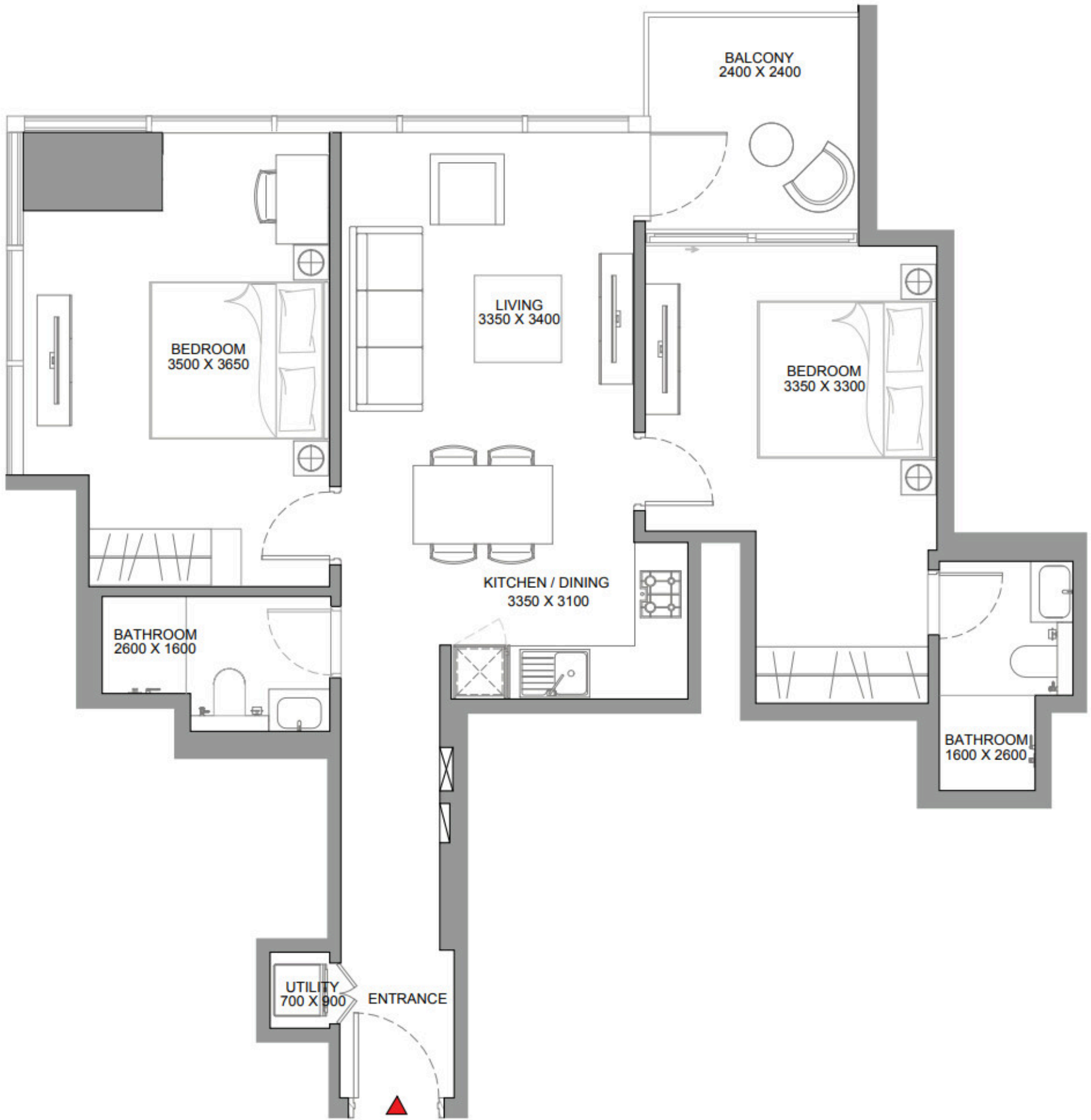


Bedrooms  
**1 BR**



Balconies  
**1**





Building 1

## 2 Bedroom Apartment Type A

Apartment • 8 units

**2 359 016 — 2 402 523 AED**

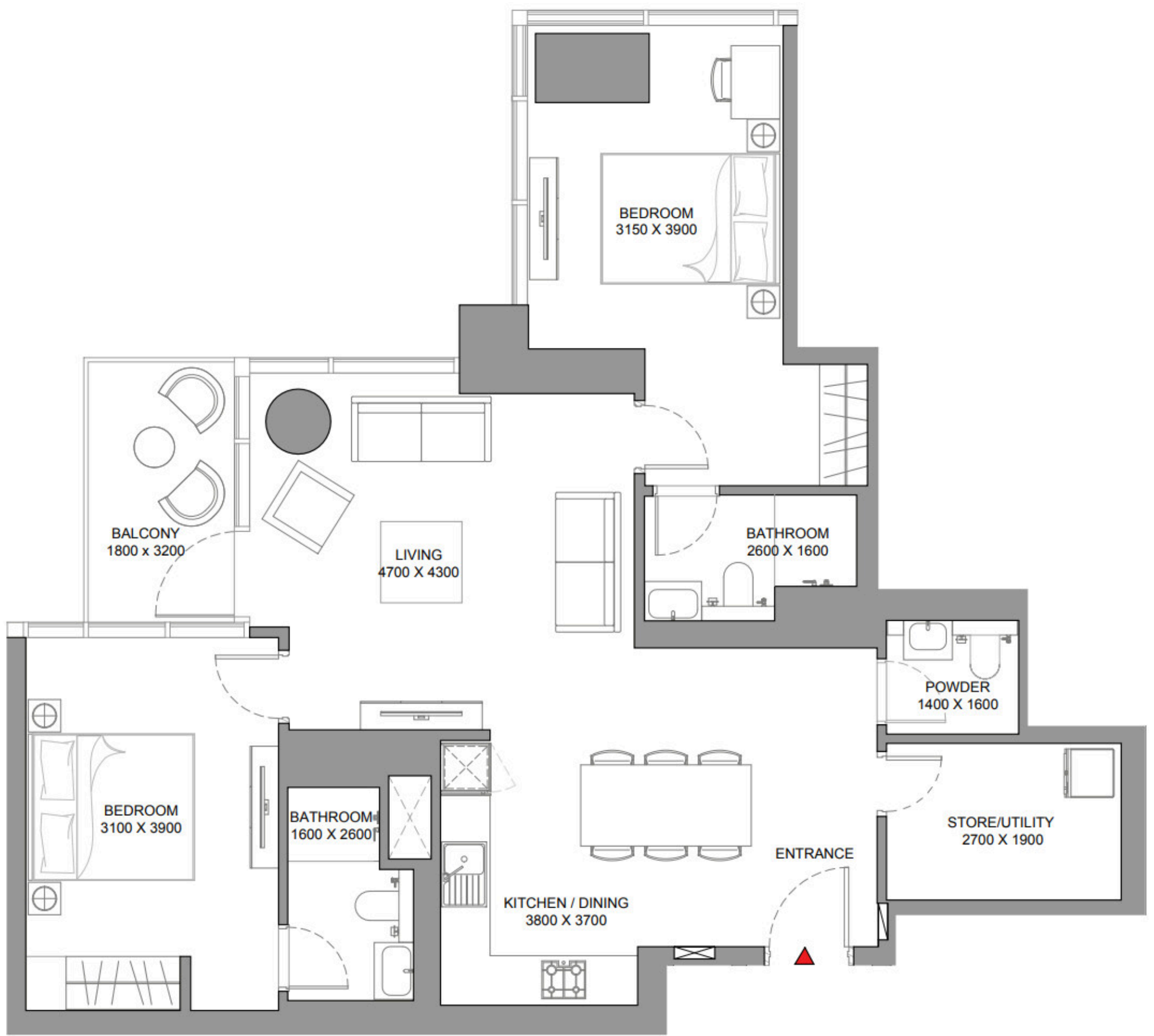
 Total S  
**966.81 ft<sup>2</sup>**

 Bedrooms  
**2 BR**

 Living S  
**881.13 ft<sup>2</sup>**

 Balconies  
**1**





Building 1

## 2 Bedroom Apartment Type B

Apartment • 25 units

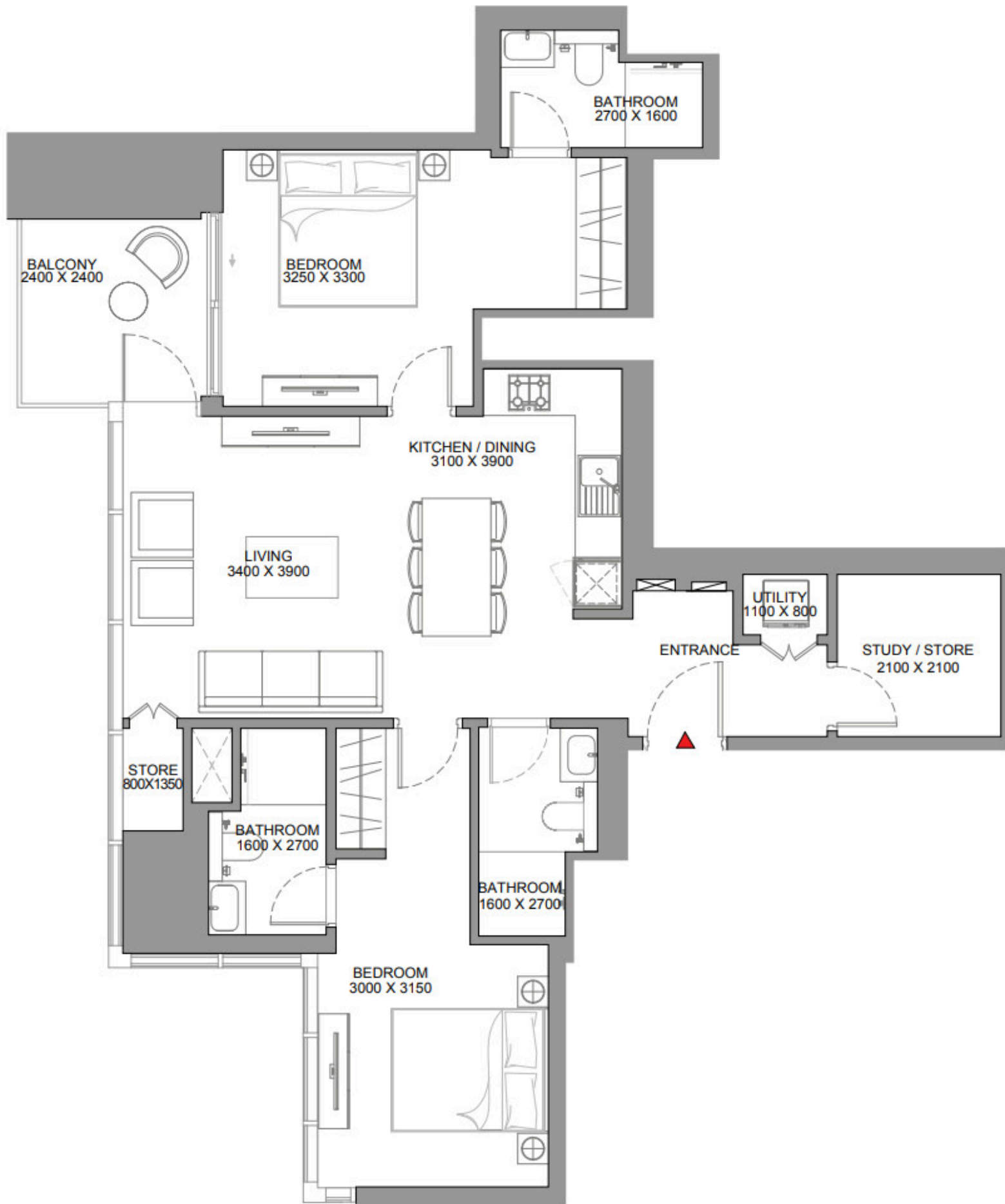
**2 880 700 — 3 036 258 AED**

 Total S  
**1152.28 ft<sup>2</sup>**

 Bedrooms  
**2 BR**

 Living S  
**1085.54 ft<sup>2</sup>**

 Balconies  
**1**




**Building 1**

**2.5 Bedroom Apartment Type A**

Apartment • 24 units

**2 591 745 — 2 691 003 AED**

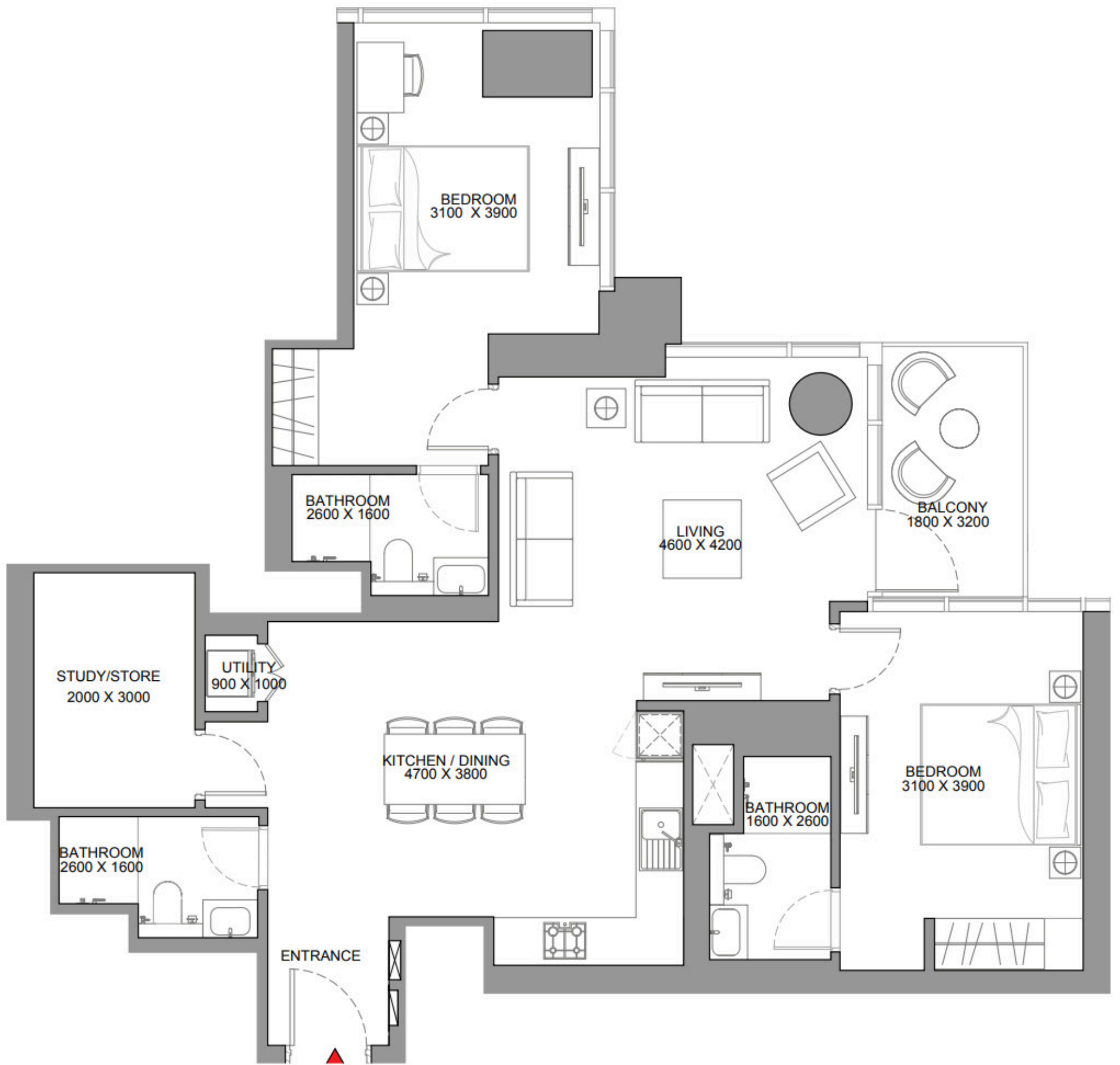
 Total S  
**1102.87 ft<sup>2</sup>**

 Living S  
**1017.19 ft<sup>2</sup>**

 Bedrooms  
**2 BR**

 Balconies  
**1**





Building 1

## 2.5 Bedroom Apartment Type B

Apartment • 23 units

**3 068 800 — 3 216 102 AED**



Total S

**1227.52 ft<sup>2</sup>**



Living S

**1160.78 ft<sup>2</sup>**



Bedrooms

**2 BR**



Balconies

**1**

# Payment plan 60/40



## Example

Lets take a look how this payment plan will work with the cheapest unit in this project

**1 BR • Apartment • 788.56 ft<sup>2</sup> • 1 774 260 AED**

<b>DOWN PAYMENT</b> 70 970 AED fees included	<b>425 822 AED</b>
<b>DURING CONSTRUCTION</b> in 4 payments	<b>709 704 AED</b>
<b>ON HANDOVER</b> in 1 payment	<b>709 704 AED</b>
<b>TOTAL SUM</b>	<b>1 916 201 AED</b>